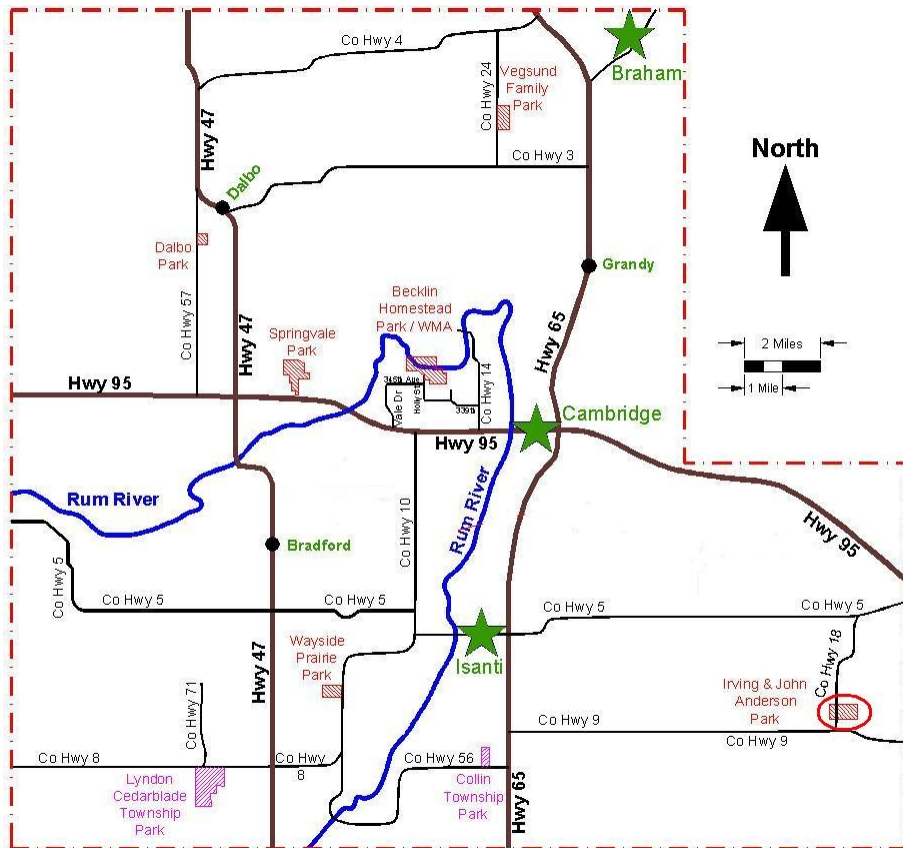


## Irving & John Anderson County Park 27241 Furman St NE, North Branch MN 55056

The park is located in Oxford Township on both sides of County Road 18, a quarter mile north of County Road 9 and two miles south of County Road 5.



Isanti County Parks Department  
555 18th Ave SW  
Cambridge MN 55008  
(763) 689-8220

MINNESOTA'S  
**VISION** | SHIP  
Statewide Health Improvement Program  
*A Better State of Health*

<http://www.co.isanti.mn.us/parksrehome.htm>

## IRVING & JOHN ANDERSON COUNTY PARK

Irving & John Anderson County Park encompasses 174 acres and was added to the Isanti County Park system in 2007. It typifies the Anoka Sand Plain region consisting of northern hardwood forests, restored prairies, wetlands and lakes. The park protects one half mile of undeveloped shoreline along Horseleg and Horseshoe Lakes.



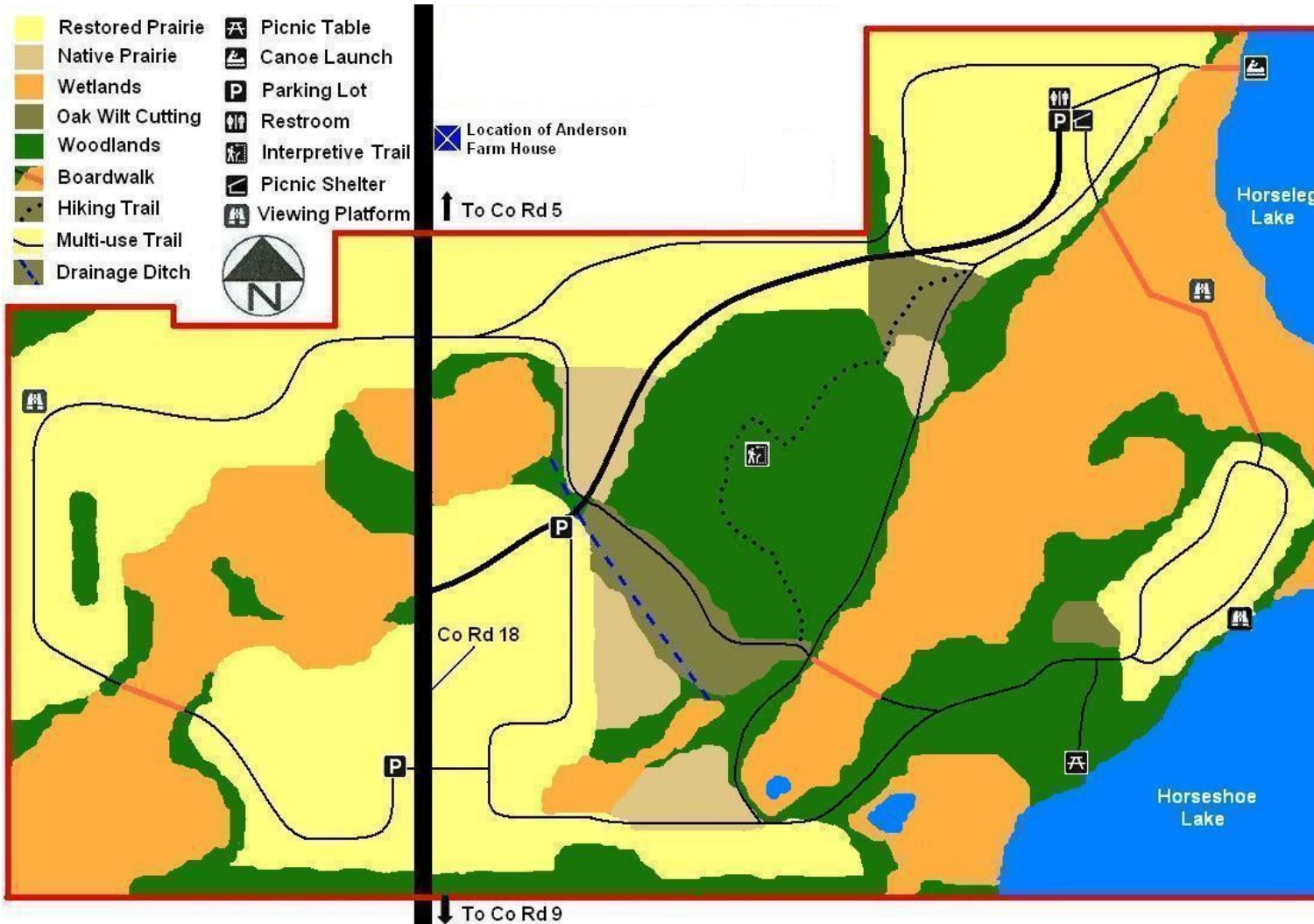
Snow Buntings visiting the park — photo taken by Steve Kingsbury

While enjoying the park you may have the opportunity to see numerous animals including white tailed deer, turkeys, pheasants, Blanding's turtles, beaver, red headed woodpeckers, sandhill cranes, and numerous migratory birds.

The Friends of Anderson Park offer a variety of interpretive programs and volunteer work days held throughout the year. To find out more about the Friends of Anderson Park visit their website at

<http://www.andersonparkfriends-isanti.org/>

# IRVING & JOHN ANDERSON COUNTY PARK



## FACILITIES

Facilities currently include two trail head parking areas, a group picnic shelter, information kiosk, picnic tables, grills, benches, and restroom.

## TRAIL SYSTEM

There are 3 miles of multi use trails throughout the park. Trail uses include hiking, biking, horseback riding, snowshoeing and cross country skiing.

## THINGS TO REMEMBER

Please keep pets on a leash and pick up after them while enjoying the park.

Go to parks website for Rules & Regulations and to view park ordinance.

